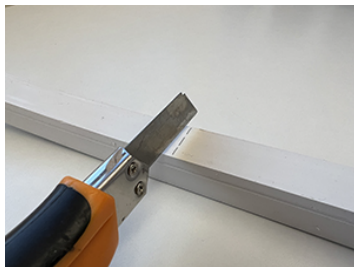
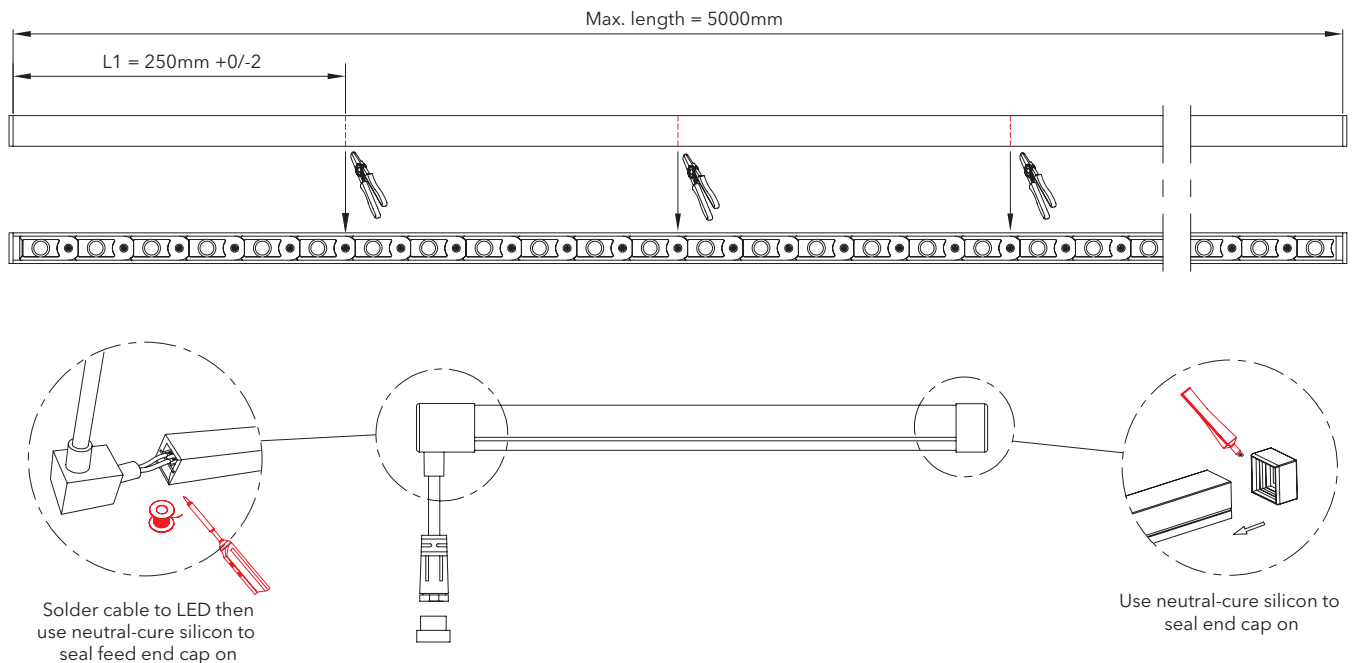
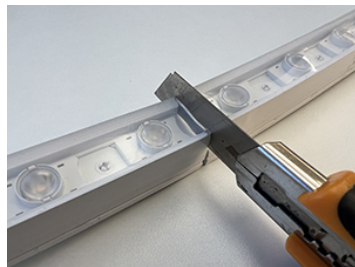


## CUTTING & ASSEMBLY

⚠ Ensure power is turned off before cutting. Cut only at positions marked on outer casing.



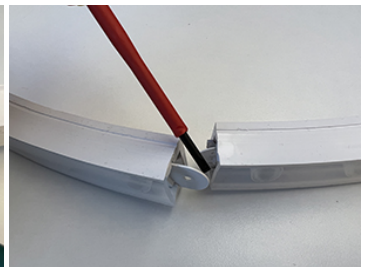
1. Cut through silicon casing at marked locations



2. Continue cut around all surfaces



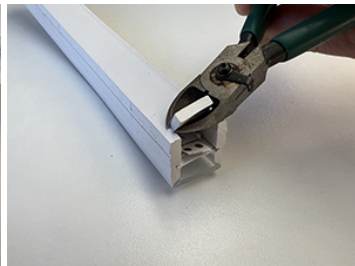
3. Use sharp side cutters to cut through PCB



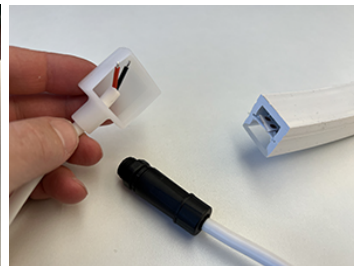
4. Pry internal plastic structure apart



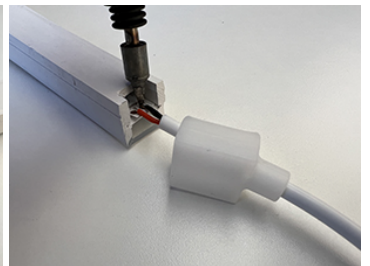
5. Trim internal plastic structure flush with end



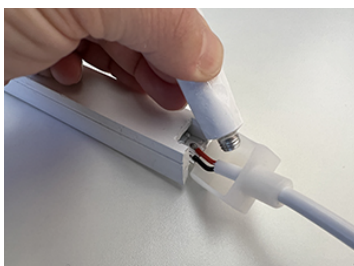
6. Trim silicon casing approx. 8mm from end as shown to allow cable to pass through



7. Feed kit with silicon end cap



8. Solder feed kit to pads on back of PCB. Ensure correct polarity



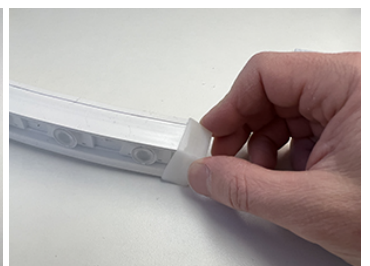
9. Fill end cap with neutral-cure silicon



10. Finished feed end



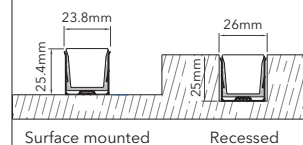
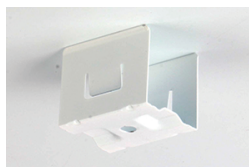
11. Use neutral-cure silicon to affix non-feed end cap at opposite end



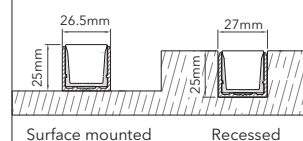
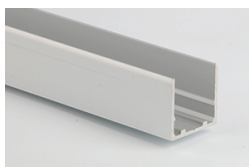
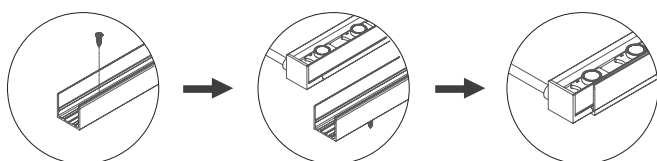
12. Place end cap over end of Gracie Grazer

## ASSEMBLY & INSTALLATION

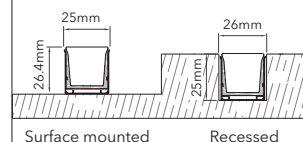
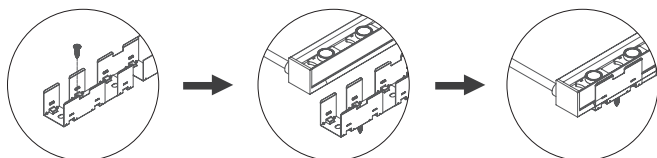
### Installation using GG23-MC mounting clip



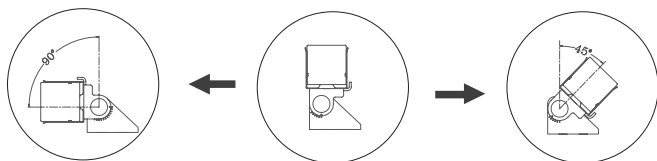
### Installation using GG23-MP mounting profile



### Installation using GG23-FMP flexible mounting profile



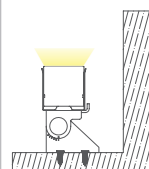
### Installation using GG23-MBADJ adjustable mounting bracket, combined with GG23-MC, GG23-MP or GG23-FMP.



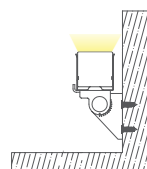
Max. forward rotation: 90°

Max. forward rotation: 90°

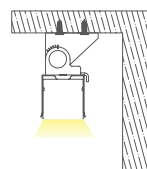
Max. reverse rotation: 45°



Floor mounted



Wall mounted



Ceiling mounted



GG23-MBADJ adjustable mounting bracket, combined with GG23-MC



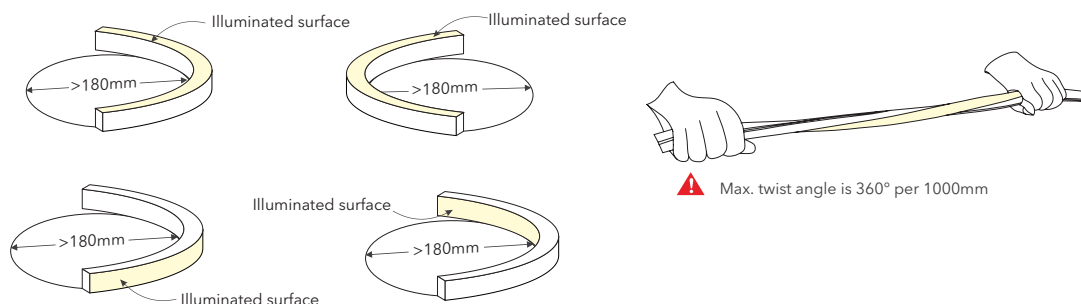
GG23-MBADJ adjustable mounting bracket, combined with GG23-FMP



GG23-MBADJ adjustable mounting bracket, combined with GG23-MP

## ASSEMBLY & INSTALLATION

1. Take care when cutting Gracie Grazer to avoid damage to the product.
2. Take care when handling Gracie Grazer and avoid irregular twisting and bending during installation. Note minimum bend & twist dimensions below.



To maintain 5 year warranty, Gracie Grazer should be protected from direct sources of UV.  
Gracie Grazer is suitable for installations under canopy or eave.

## WIRING DIAGRAM

1. A power supply with 20% greater capacity than the luminaire is recommended.
2. Ensure power is off before connecting luminaire.
3. Ensure 5m maximum length of Gracie Grazer is not exceeded.

