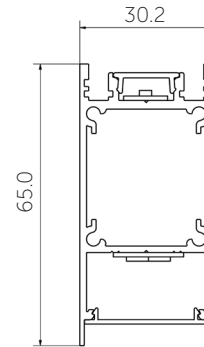
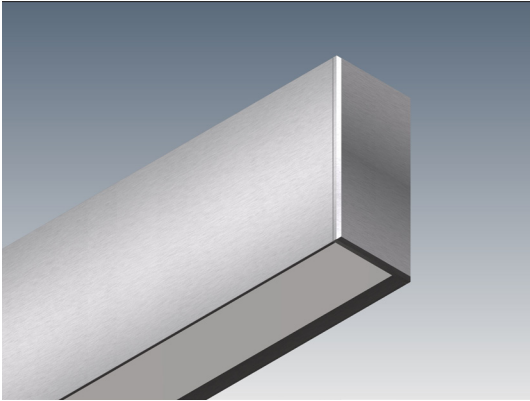


Bob Each Way 65



The Bob Each Way 65 profile is a compact uplight/downlight solution. A versatile system suitable for various mounting options, Bob Each Way 65 can be surface mounted, wall mounted and suspended. Both wire and rod suspension options are available for the Bob Each Way 65 profile.

MOUNTING OPTIONS			DIFFUSER OPTIONS			SUPER SERIES LED STRIP OPTIONS		
Surface mounted			Opal			Lumens per metre	Watts per metre	Colour temp.
Rod suspended			Clear			310lm		2700K
Wire suspended						330lm	3W	3000K
Wall mounted						345lm		4000K
						760lm		2700K
						800lm	7W	3000K
						840lm		4000K
						1520lm		2700K
						1600lm	14W	3000K
						1680lm		4000K
						1955lm		2700K
						2060lm	20W	3000K
						2160lm		4000K
						2400lm		2700K
						2530lm	26W	3000K
						2650lm		4000K

- LED strip options vary depending on region – please consult your local distributor for more information. Other LED strip options are available on request, including IP54 and IP67.
- All lumen values refer to the bare LED strip. Losses through diffuser/profile are not represented. Consult photometric data.
- 5 year manufacturer's warranty on Super Series & Spec Series LED strip.

ACCESSORIES



JN-ST-6
Straight joiner



JN-90-6
90 degree joiner



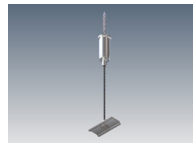
JN-LOC
Joiner locator



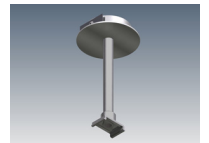
CB-BEW-60-R-S / CB-BEW-60-R-W
/ CB-BEW-60-R-B
Cable base 60, recessed



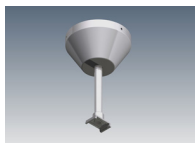
CB-BEW-80-SM-S / CB-BEW-80-SM-W
/ CB-BEW-80-SM-B
Cable base 80, surface mount



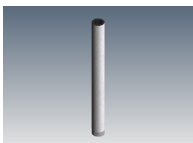
SWK-5-1M / SWK-5-2M /
SWK-5-4M
Wire suspension



SRK-5-S / SRK-5-W / SRK-5-B
Rod suspension kit (rod not incl)



SRK-10-S / SRK-10-W /
SRK-10-B
Rod suspension kit (rod not incl)



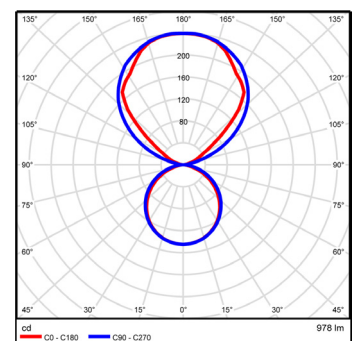
ROD-0.5M / ROD-1M / ROD-2M
Suspension rod - 0.5m, 1m, 2m



WB-BEW
Wall bracket

ADDITIONAL INFORMATION

Applications	Task lighting over kitchen islands or reception counters, mirror lighting.
Installation	Interior or exterior (with IP67 rated LED strip).
Materials	Extruded aluminium body, polycarbonate diffusers, aluminium end caps.
Finish	Natural silver anodised or custom powder coat.
Light source	LED ribbon strip.
Power supply	24V DC - remote driver options ranging from 6W up to 320W.
Dimmable	Various options available, please enquire.



Polar curve for 1890 lumen LED strip down with opal diffuser and 1340 lumen LED strip up with clear diffuser.

